

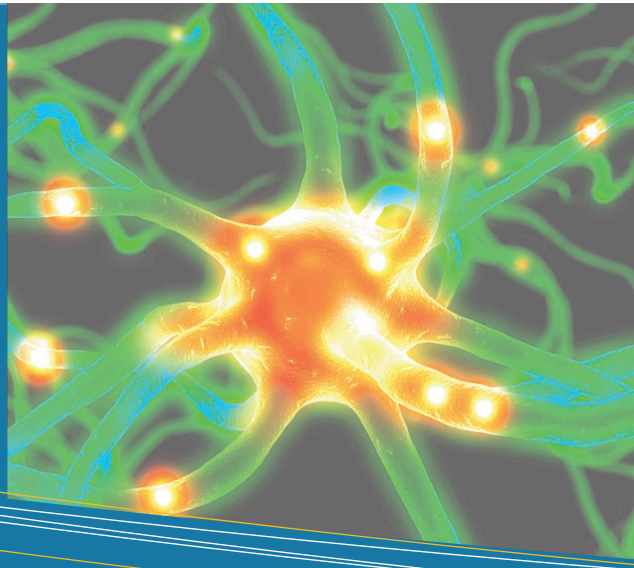
Presenter Biography

Steven McCleary
LMSW, CAADC, CCS



Steve currently serves as Clinical Supervisor of Out-patient Services at Arbor Circle Corporation. He also serves as adjunct faculty at Grand Valley State University's School of Social Work. Steve has 15 years experience treating co-occurring mental health and substance use disorders. Steve has training in mindfulness-based interventions, neurobiology, and Dialectical Behavior Therapy.

NOTICE: Should a registrant require special assistance, please contact Centra Wellness Network to discuss needs within 48 hours of conference commencement.



**CEUs Available—Social Work,
CAADC, and Nursing**

Target Audience: Social Worker, Nurses, Addictions Counselors, Therapist, and any health care professional interested in learning more about advancements in neurobiological models of addiction.

DATE: Friday, February 24, 2012

TIME: Registration, 8:30AM–9 AM
AM Session, 9 AM–12 PM
PM Session, 1 PM–4 PM

LOCATION: Mills Community House
891 Michigan Ave. (US-31)
Benzonia, MI 49616

CONTACT: Joy Pomeroy
JPomeroy@centrawellness.org
Phone: (231) 309-1720
Fax: (231) 723-1504
P.O. Box 335
Manistee, MI 49660

Addictions & Brain Neurobiology, The Art & Science of Diagnosis

Presented By:
Steve McCleary
LMSW, CAADC, CCS

Advancements in Addictions Series

(877) 398-2013



Centra Wellness
NETWORK

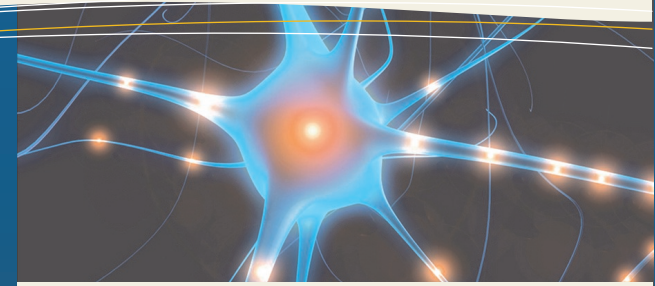
Formerly known as Manistee-Benzie
Community Mental Health.

Addictions & Brain Neurobiology, The Art & Science of Diagnosis

ADVANCEMENTS IN ADDICTIONS SERIES



Explore the science behind addiction, learn how the brain becomes hardwired and changes as substances are used. Do you want to enhance your awareness of evidenced based interventions that can really work for Co-Occurring Disorders and substance use? Build and practice your interviewing and assessment skills using DSM-IV criteria, ASAM Dimensions of care in this instructional and interactive half day or full day seminar.



Registration Information

Name: _____

Title: _____

Organization: _____

Phone: _____

E-mail: _____

License #: _____

Fee Category (Check one):

• Affiliation Member:

\$30-1/2 Day

\$60-Full Day

• Non-Affiliate:

\$35-1/2 Day

\$70-Full Day

Educational Credits: Application pending approval for 6.0 Certified Addictions Counselor Credits (MCBAP), 6.0 Michigan Social Work CEUs (NASW), and 6.0 Michigan Nursing Association Credits through West Shore Community College. Full or half day sessions with 3.0 or 6.0 CEUs are available. All sessions must be attended and evaluation submitted to be eligible for credit. (Check one).

CAADC

BSW/MSW

MNS

DEADLINE & CANCELATIONS: The registration and payment must be received by February 20, 2012. Registration fee is transferable, but non-refundable.

Neurobiology Treatment Implications for Substance Use and Co-Occurring Disorders Morning Session—Participants will:

- Identify and discuss new science regarding brain function.
- Learn about the role of stress as an indicator of a maladaptive response to environmental demands.
- Learn the neurobiological process of substance use and addiction.
- Increase their awareness of at least 3 evidenced-based interventions that mediate the process of addiction and mental health disorders in the brain.
- Identify a neurobiological-based perspective of mental health and substance use disorders that reflects a shared etiology of co-occurring disorders.
- Be able to describe the goal and process of recovery from a neurobiological perspective.

Assessment & Diagnosis of Substance Use and Co-Occurring Disorders Afternoon Session—Participants will:

- Learn 5 principles of integrated assessment and diagnosis skills for substance use and mental health disorders.
- Practice 3 skills related to conducting assessment interviews for co-occurring disorders.
- Review the 6 ASAM dimensions of care and apply them to levels of client functioning.
- Review DSM-IV diagnostic criteria for substance use disorders, primary mood disorders, and apply this criteria to determine presence of co-occurring disorders.



Centra Wellness
NETWORK

Formerly Manistee-Benzie CMH

PRESENTER: Steven McCleary, LMSW, CAADC, CCS

DATE: Friday, February 24, 2012

TIME: AM Session, 9 AM—12 PM; PM Session, 1 PM—4 PM

LOCATION: Mills Community House

891 Michigan Ave. (US-31), Benzonia, MI